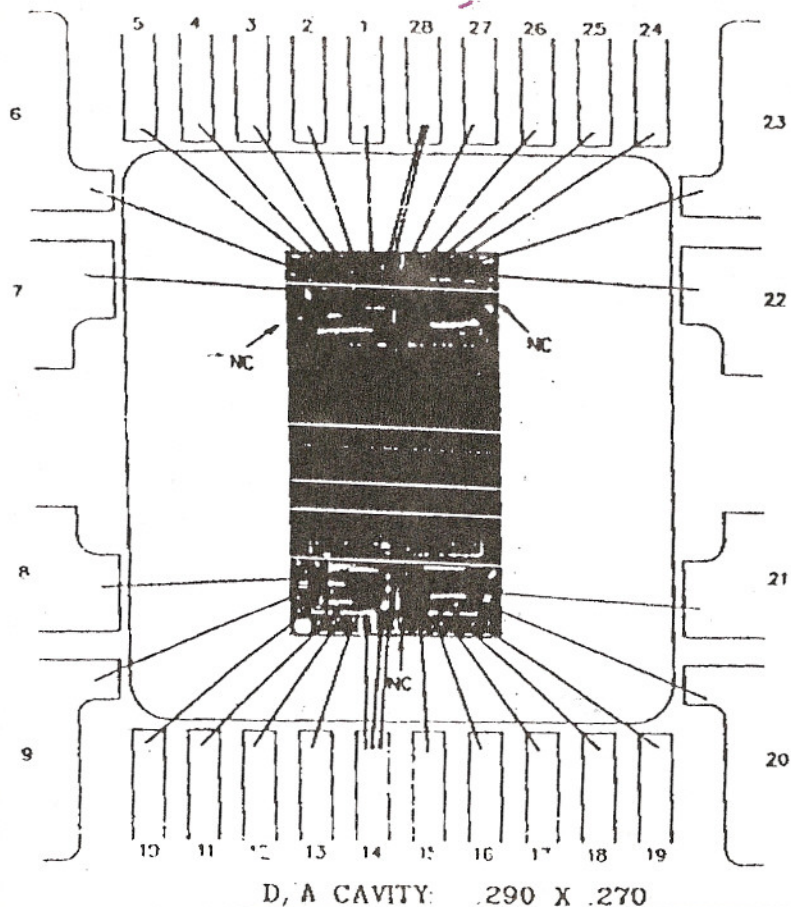




# Sierra Components, Inc.

2222 Park Place Building 3 Suite E • Minden, Nevada 89423  
 Phone: 775.783.4940 Fax: 775.783.4947

Chip back potential is the level which bulk silicon is maintained by on-chip connection, or it is the level to which the chip back must be connected when specifically stated below. If no potential is given the chip back should be isolated.



**Topside Metal: Al**  
**Backside: Si**  
**Backside Potential:**  
**Mask Ref: 8250**  
**Bond Pads : .004"**

**APPROVED BY: CB**  
**MFG: IDT**

**DIE SIZE : .278" x .523"**  
**THICKNESS: .020"**

**DATE: 2/7/01**  
**P/N: IDT7203L**

DG 10.1.2  
 Rev A 3-4-99